



Community Impact Year End Grant Report

2022

UNITED WE TACKLE TOUGH CHALLENGES.

To address our community's most persistent and systemic problems, we must have an organized, proven strategy: we call it **Community Impact**.

Through Community Impact, we are re-imagining a more equitable and resilient community - one where more of our students are graduating prepared for success at college or on the job, more local families are financially stable, and more neighbors are living healthy lives. Our commitment to Diversity, Equity, and Inclusion is woven throughout this entire process - because every person deserves to thrive.



Community Change Grants

These grants are highly targeted and provide multi-year funding to programs and collaborations that are working alongside United Way to solve our community's most challenging problems in health, education, and financial stability.



Community Building

United Way brings nonprofits, businesses, government, and people together to innovate and find new solutions to community problems. This work often leads us to open new grant opportunities or establish pilot projects. It's hard and rewarding work.



Community Essentials Grants

With 45% of our households struggling to make ends meet, our community must have a strong safety net.. These grants support our most vulnerable neighbors experiencing the hardest of times through an efficient and effective safety net of services with minimal to no barriers.

BIG, BOLD GOALS

United Way works alongside local organizations and subject matter experts to set bold goals for our grant work. When you give to United Way, you can trust that we are putting resources into high quality programs led by local people who care deeply about changing our community for good.

Grant Area	Big, Bold Goals	Reporting Published
 Community Essentials	Prevent crisis, provide stability, and support those navigating a complex social service system.	September 2022
 Early Grade Level Success	Increase kindergarten readiness by 10% Increase third grade math and english achievement among low-income and black male students by 10% Decrease chronic absenteeism by 10%	September 2022
 Farmers Feeding Families	Increase access to nutritious food, especially for senior citizens, rural residents, and children.	November 2022
 Child Well-Being	Decrease child maltreatment Increase parent and caregiver access to supports increase capacity to serve children and adults who have experienced trauma	April 2023
 Victory over Violence	Stop violence Foster social connectedness and belonging among youth Support trauma recovery services Encourage collaboration to support proven programming that reduces involvement in the criminal or juvenile justice system	June 2023
 United for Equity	Create community awareness Encourage collaboration Create more Firsts Break down barriers to success	2023

Early Grade Level Success

\$700,000 in grants

Impact at a Glance

98%

of first graders demonstrated academic progress in reading

77%

of kindergartners demonstrated academic progress in math

92%

of Black third graders demonstrated academic progress in both reading and math

90%

of adults are engaged in learning or educational activities with their children birth to five

89%

of children birth to three who had an identified developmental delay demonstrated developmental progress



LEXIE

On track for school success thanks to a developmental screening and parent tips

Lexie's mother shared that she always felt that her child was not developing the same as other children her age but she did not know what to do about it. Upon enrollment into the program, Lexie completed an Ages and Stages questionnaire which showed noted and potential delays in Communication, Fine Motor, Problem Solving, and Personal Social domains. This information was no surprise to Lexie's mother, and she asked, "Now what?".

Lexie's mother worked alongside Early Childhood Specialists to complete a goal plan, was provided with a list of quick at-home activities, and was asked to come back every couple of weeks so that staff could continue to spend time working with Lexie.

It was very clear that Lexie was extremely interested in learning and would pick activities up quickly when interested in them. The staff tailored activities towards Lexie's interest and shared what they had learned about Lexie with her mother as well.

Three months later Lexie was rescreened, and all previously noted and potential delays were no longer present. When Mom picked up Lexie the results were shared with her and she was pleasantly surprised. When discussing the progress in the short time span she shared that it was almost unbelievable because she did not do "that much". She remembered playing fun matching games with Lexie on walks, and talking with her about shapes as she passed them in the grocery store but "that was it". To which staff was happy to respond, "and that was enough".



Three months later
Lexie was
rescreened and all
previously noted and
potential delays
were no longer
present.

Community Essentials

\$663,000 in grants

Impact at a Glance

106,586

home delivered meals to 654 senior citizens

87%

of people served improved their dental health

384

people had assistance navigating complex human service systems and secured their benefits

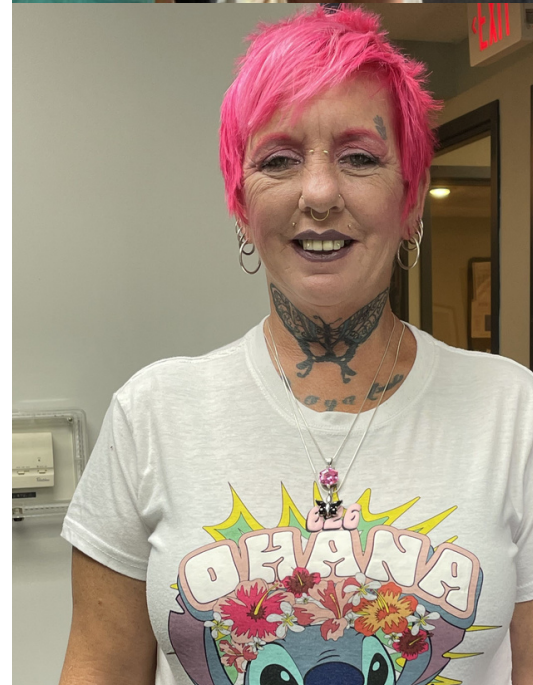
4,260

rides provided to seniors and adults with disabilities

104

birth certificates provided, allowing people to apply for jobs, access benefits or attend school.

FOR THE GRANT PERIOD JULY 1, 2021 - JUNE 30, 2022



KEVIN & IESHA

Safe, stable housing and quality case management services help a local family leave homelessness behind and pursue education, career opportunities

Kevin and Iesha had been homeless for close to a year before entering the Emergency Shelter for Families program. The family welcomed baby KJ soon afterward. They immediately began working on getting vital information, as well as obtaining needed resources.

They have both done very well in Case Management, which involves budgeting, working on organization, attending all meetings, and paying rent and utilities on time. A United Way grant supports the case management services.

This young family worked for two months to accomplish goals before transferring over to Maple Grove, a project-based transitional opportunity, through the Housing Authority of Champaign County. They accomplished all of this even with baby KJ needing a stay in the NICU - a difficult hurdle for any family.

Since moving into Maple Grove, Kevin and Iesha have been actively working on their goals. Both Iesha and Kevin are returning to school to get their GED's. Iesha plans to work as a CNA, and Kevin's goal is to pursue a degree in technology gaming while working full-time. Baby KJ is a happy, healthy four month old.



Kevin and Iesha report that they are grateful to finally have a safe place for themselves and their baby.

SUCCESS & CHALLENGES

This grant reporting period covers July 1, 2021 - June 30, 2022. During this time in our community, the health and economic impact of COVID-19 was still prevalent.

Early Grade Level Success

- Our programs served an estimated 2,596 children and families.
- The highest achievement percentages were in reading. Programs reported slightly lower achievement rates in math.
- Grant partners were able to successfully report outcomes for target populations. All programs reported outcomes for Black children that were within 3 percentage points of the overall average. We will continue to monitor program effectiveness for target populations.
- The general staffing shortages found across all employment sectors have impacted program staffing and the ability to hire.
- Due to staffing challenges, a handful of grant programs are serving fewer children than they anticipated, and other programs started later than planned. Despite this, the program quality remains high and students are achieving at or above the program's targeted goals.
- Some after-school programs and summer youth programs saw irregular attendance due to COVID exposure and a general lack of structure and routines in families.
- Transportation of participants from schools to after-school programming has been one of the largest challenges.

Community Essentials

- Our grant partners served an estimated 31,842 people. The actual number served is likely much larger.
- Food and nutrition programs reported strong results in terms of both number, quantity and quality of food provided.
- The general staffing shortages found across all employment sectors have impacted program staffing and the ability to hire.
- COVID-19 is still impacting the delivery of program services – in particular, programs have faced challenges accessing state or federal offices. In spite of this, partner programs that assist people in navigating these complex systems did see positive results.
- Some programs have not been able to serve as many people as they anticipated. However, many of these programs also saw better outcomes than projected in their grant application.

WHAT'S NEXT?

Our team is motivated to do more. We are working to raise additional funds to support and expand our grantmaking. As we approach our milestone 100th anniversary, we are excited about the potential to bring even more people into the work of United Way.

As a friend and partner with United Way, we invite you to share our work and our bold goals. It takes all of us, working together, to change our community. That's how we LIVE UNITED.



2022 Community Report

Twice a decade, United Way aggregates data from a variety of trusted sources and publishes a report on health, education and financial stability in our community. Our latest report will be available in **October 2022**.



Child Well-Being Year 1 Report

A report on this Community Change Grant will be available in **April 2023**. United Way will also be raising awareness of Child Abuse Prevention Month.



United for ALICE - Updated Essentials Index

In **June 2023**, the United for ALICE project will release an updated report on the cost of living in Champaign County and the state of Illinois.